

Mounting frames for wall-mounted WC | Load-bearing and light weight walls



SmartiKa 9.0 technical data sheet
Standard code 377109

Sommario

| | |
|-----------------------------|---|
| DESCRIPTION | 3 |
| FEATURES | 3 |
| STRUCTURE FEATURES | 4 |
| CISTERN FEATURES | 4 |
| STANDARD SUPPLY | 5 |
| ON DEMAND | 5 |
| DIMENSIONS | 6 |
| PACKAGING | 6 |
| ACCESSORIES AND SPARE PARTS | 7 |
| LIST | 8 |

Smartika 9.0

Mounting frame for wall-hung WC suitable for load-bearing, pre-existing load-bearing, lightweight and plasterboard walls according to the specific kit supplied.

DESCRIPTION

Mounting frame for wall-mounted WC equipped with Monolith 9.0 cistern (9/6lt). According to the specific kit supplied, is suitable for load-bearing installations, pre-existing load-bearing installations, lightweight walls and plasterboard.

FEATURES

Features and plus



For wall-hung wc



For lightweight walls and plasterboard (according to the specific kit supplied)



For load-bearing and pre-existing load-bearing walls (according to the specific kit supplied)



9lt in-wall cistern (adjustable to 6lt)



Dual flush with adjustable partial flush (from 2.5 to 3.5lt)



Maintenance operations in 5 minutes



Assembly operations in 5 minutes



FLEXVALVE



Monoblock container



Lago system



NORMA-PLUS float valve, acoustic cl.1, LGA-TUV (standard for code 377109)



100% Made in Italy

STRUCTURE FEATURES

- Painted steel frame
- Structure certified to bear 400kg according to standards UNI EN 977/1-997-89500/2 if installed / walled correctly

CISTERN FEATURES

- 9lt high density PE monoblock container without joints
- Repairable in case of accidental drilling
- Plaster holder fixing mesh (according to code)
- Extruded closed-cell PE insulation, anti-condensate and soundproofing with thermal resistance
- FlexValve: discharge valve with silicon gasket. Made of polypropylene with silicone additive (PTE)
- NORMA-PLUS float valve, acoustic class 1, LGA-TUV approved adjustable between 9 and 6lt (standard for code 377109)
- Maintenance operations without using tools
- Pneumatisable without the need to replace internal components

STANDARD SUPPLY

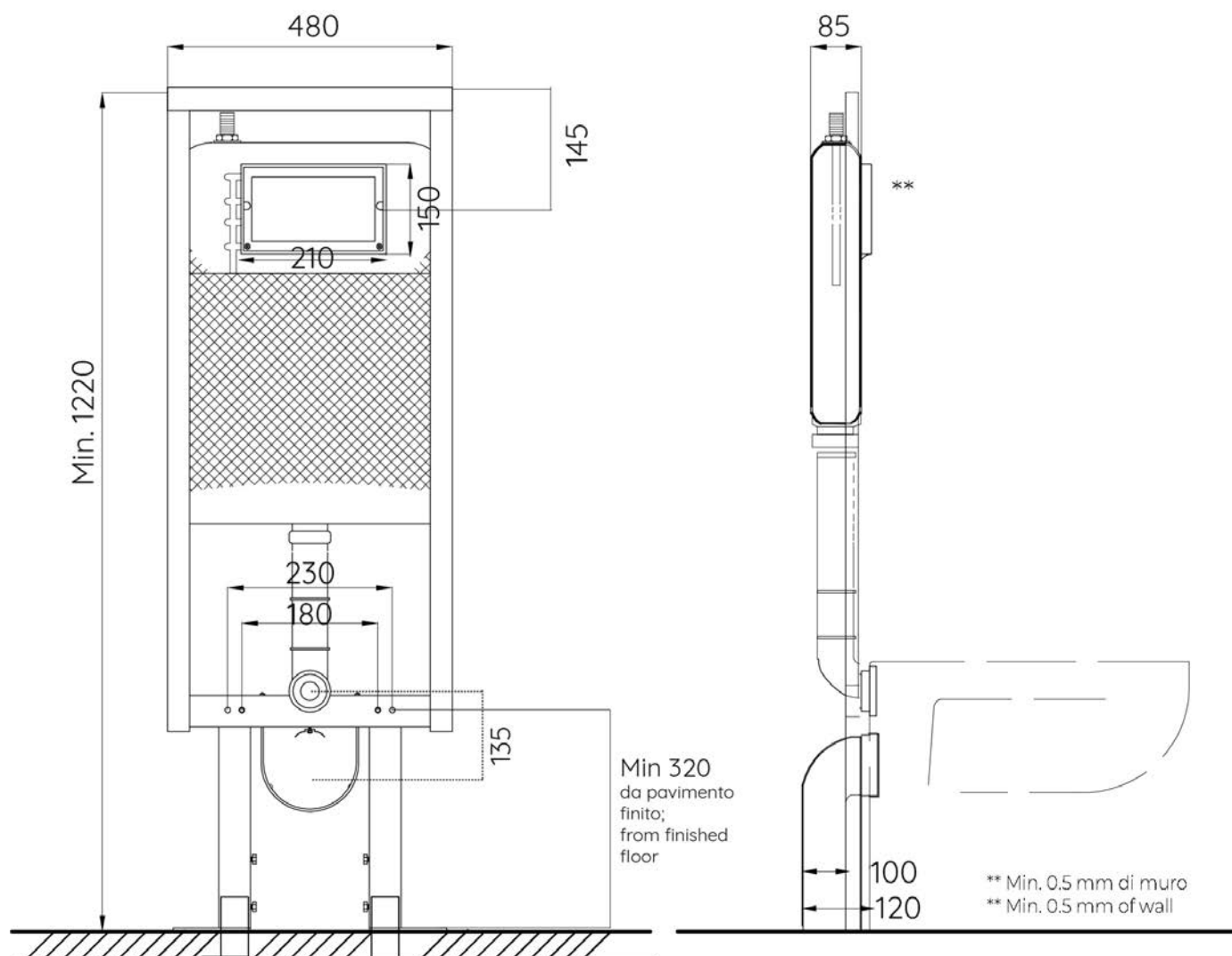
- Painted steel frame
- Monolith 9.0 cistern fixed on frame
- Fixing brackets for load-bearing walls
- WC fixing centre distances for M12 threaded bars adjustable to 180 mm and 230 mm
- M12 threaded rods for WC fixing with nuts, protective sleeves and caps
- White pipe for connection to wall-mounted WC and clamp gasket
- Ø 90mm black sleeve with gasket
- Black outlet bend 90° Ø 90 mm
- Dismountable stop valve 3/8"-3/8" including fitting 1/2"-3/8"
- Protection template to shape perimeter of tiles or plaster
- Protection caps for discharge pipe and outlet bend

IT NEEDS TO BE INTEGRATED WITH DUAL COUNTERPLATE COD. 317010

ON DEMAND

- Dual counter-plate
- Dual flush plate Fidia/Itaka/Aurea
- 90/100mm adaptor
- 90/110mm adaptor
- Fixing kit for plasterboard, lightweight walls and pre-existing load-bearing walls
- Pneu system
- Kit to diagonalize the outlet bend

DIMENSIONS

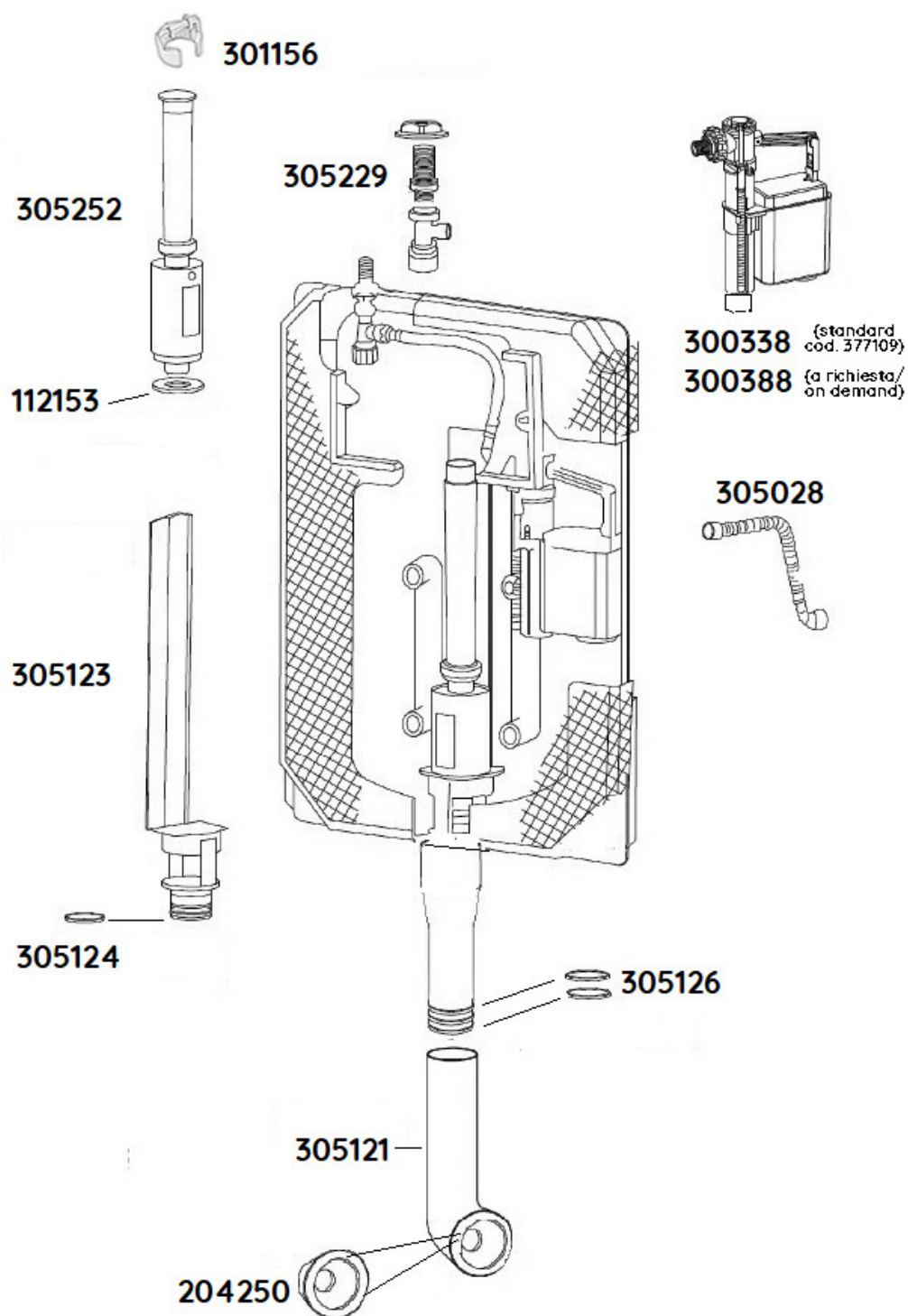


S

PACKAGING

| CODE | PCS | LxDxH | KG |
|--------|-----|-----------------|----|
| 377109 | 1 | 495x150x1235 mm | 11 |

ACCESSORIES AND SPARE PARTS



ACCESSORI INCLUSI INCLUDED



NON INCLUSI NOT INCLUDED



ACCESSORI A RICHIESTA ON DEMAND



LIST

| Smartika 9.0 | |
|--------------|---|
| CODE | DESCRIPTION |
| 305229 | Dismountable brass stop valve 3/8"-3/8" including fitting 1/2"-3/8" |
| 305028 | Flexible hose with gasket L. 280 mm 3/8" - 3/8" |
| 300388 | Norma float valve 3/8" for concealed cisterns (on demand according to the code) |
| 300338* | NORMA-PLUS float valve 3/8" for concealed cisterns, acoustic cl.1, (standard for code 377109) |
| 305123 | 9.0 removable drain with O-Ring gasket |
| 305124 | O-ring gasket for 9.0 drain |
| 305252 | Monolith 9.0 discharge valve |
| 112153 | Silicon gasket for discharge valve ø 60/21 mm |
| 305121 | Insulated discharge pipe, complete with conic gasket |
| 204250 | Universal conic gasket ø 60x32/40 mm |
| 305126 | O-ring gasket for discharge pipe coupling |

| Smartika 9.0 | |
|--------------|--|
| 369080 | Black outlet bend 90° ø 90 mm (standard for cod. 377109) |
| 379080 | Black outlet bend 90° ø 90/110 mm |
| 379081 | Black sleeve with gasket ø 90mm (standard for cod. 377109) |
| 617004 | Concentric sleeve ø 100/110 mm |
| 820560 | Adaptor ø 90/110 mm |
| 820561 | Adaptor ø 90/100 mm |
| 123003 | M12 threaded bars for WC fixing, complete with nuts and protective covers |
| 204015 | White pipe ø40 mm + clamp gasket Ø40 mm for connection to wall-mounted WC (standard for cod. 377109) |
| 204016 | White pipe ø32 mm + clamp gasket Ø32 mm for connection to wall-mounted WC |
| 368403 | Fixing brackets (standard for cod. 377109) |
| 300060 | Universal Smartika fixing kit for every installation (on demand) |
| 369088 | Smartika fixing kit for back-to-wall, light masonry wall, plasterboard (on demand) |
| 369088-P | Smartika fixing kit for back-to-wall and light masonry wall (on demand) |
| 369085 | Pair of fixing caps for wall-hung WC |
| 300061 | Kit to diagonalize the outlet bend |
| 400190 | Pneu transforming kit with aluminium inspection plate and remote white hand-button |
| 400194 | Pneu transforming kit with aluminium inspection plate and remote inox leg-button |
| 400195 | Pneu transforming kit with aluminium inspection plate and remote white plastic leg-button for floor/wall |
| 400197 | Pneu transforming kit with aluminium inspection plate and remote white hand-button |